

*Living*  
in the kitchen.

**nolte**<sup>®</sup>  
KÜCHEN





ECKHARD WEFING  
Managing Director

MANFRED WIPPERMANN  
Managing Director

MARC HOGREBE  
Managing Director

## Living in the kitchen!

What is the essence of a kitchen? It needs to look good, be a centre of communication while cooking, chatting and indulging. Make your work easier and keep everything well organised. And also perfectly suit you, your wishes and needs. While also reflecting your style whatever your budget may be.

Nolte Küchen has been synonymous with first-class quality, superior design and perfect ergonomics made in Germany for over 60 years.

This being the case, it's no surprise that Nolte Küchen has been voted Germany's favourite kitchen brand for the second time in succession. In this journal you will find countless suggestions and ideas on designing a kitchen as a living space that meets your personal wishes in every respect.

So, be inspired for: Living in the kitchen.



*Design and functionality for guaranteed satisfaction.*



*Proven quality, guaranteed reliability and healthy living.*



# CONTENTS

Mission statement .....	4	ARTWOOD   SOFT LACK .....	52	FRAME LACK .....	90
Introduction .....	6	NAPPA .....	54	WINDSOR LACK QUARTZ GREY .....	92
TAVOLA   PHOENIX .....	8	NAPPA   PHOENIX .....	56	WINDSOR LACK AVOCADO .....	94
TAVOLA   SOFT LACK PINOT .....	12	INTEGRA   SOFT LACK .....	58	Ideas for creating space .....	98
TAVOLA   SOFT LACK BAROLO .....	14	Matrix 900   Storage space .....	62	LUX   ARTWOOD .....	100
FERRO   SOFT LACK .....	16	LUX .....	63	Interior organisation .....	102
METAL   LUX .....	20	VIDA .....	64	Perfect workflows   Hob .....	104
FERRO   NOVA LACK .....	22	Colour   The mat lacquer concept .....	66	Ergonomics .....	106
PORTLAND   CORONA .....	24	SOFT LACK AVOCADO .....	68	Dishwashing and waste separation ...	108
MatrixArt 900   Design .....	26	Matrix 150 .....	71	Chilled, fresh and non-perishable .....	110
PORTLAND   LEGNO   NOVA LACK .....	28	SOFT LACK QUARTZ GREY .....	72	Interior decor .....	112
FLAIR   FERRO .....	32	SIGMA LACK .....	74	Quality and the environment .....	114
STONE   FEEL .....	34	GLAS TEC PLUS .....	76		
STONE .....	36	Lighting is mood and atmosphere .....	78		
MANHATTAN   PHOENIX .....	38	CARISMA LACK .....	80		
TIMBER   FEEL .....	40	SOFT LACK   LEGNO .....	82		
METAL   MANHATTAN .....	42	NOVA LACK   LEGNO .....	84		
STONE   ARTWOOD .....	44	LEGNO   NOVA LACK .....	86		
ARTWOOD   FEEL WHITE .....	46	Gateway to the country-style			
ARTWOOD   FEEL SAHARA .....	50	kitchen .....	88		



The kitchen is the room of rooms.  
 We probably *live* more,  
 and more *intensively*,  
 here than anywhere else in the home.  
 It is the place where  
 we meet, where we encounter others.  
 As family or friends.  
 As a couple.  
 We *cook, eat* and *enjoy* ourselves  
 in the kitchen. And sometimes we have  
 all the time in the world as we do so.  
 We argue. And *make up again*.  
 We read, write, send emails, post messages.  
 And maybe philosophise a little.  
 And – quite secretly – the kitchen sets  
 the rhythm of our day.  
 Good morning. Then midday. Then evening.  
 And sometimes night ...  
 Which is *why we love* the kitchen.

For  
*living*  
 in the kitchen.



Eva Brenner, interior designer, familiar from Germany's "Zuhause im Glück" („Happy at Home“) TV programme.



## For *living* in the kitchen.

"The kitchen is a room for cooking in. That was yesterday. Today it has become the communication hub of the home and haven of well-being. Cooking, eating, talking, laughing, living, relaxing, working – life takes place in the kitchen. That's why this room is taking on more and more significance in the home.

In choosing a kitchen, you are also choosing a whole world. It's the way the kitchen is presented, a clear indication of the individual style of the home and of the needs of everyone living in it. But whether single person, large family or gourmet – this is where there's the right kitchen for everyone. See for yourself ..."



TAVOLA oak pinot – the high-quality original.



TIMBER holm oak – an authentic reproduction.

## Original or reproduction ... ... that is the question.

Admittedly, both are hard to tell apart because, first and foremost, all of the materials used in a Nolte kitchen are marked by a feel of particular quality. Fronts in genuine materials, such as wood, glass, lacquer or cement or metal, are the perfect choice for kitchen lovers with exacting expectations. But there are also high-quality reproductions for many natural products. These absolutely authentic surfaces are in no way inferior to the original and surprise the senses with perfectly imitated look and feel. Whatever you choose: you always get a top-quality kitchen that goes perfectly with you and your budget.



# TAVOLA PHOENIX

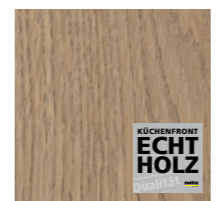


TAVOLA  
Oak pinot



PHOENIX  
White soft mat

## A home for the whole family.

"We are open and fun-loving. Our kitchen is the hub of our home. It's where we cook, eat, live and laugh together. This makes the stylish homeliness of TAVOLA in oak pinot just perfect for us. ■ **Finely grained real wood** and the combination with plain PHOENIX in white conveys a warm, homely ambience with a modern touch. That's how we like to live."



*A flush-fitted sink not only looks good, it is also totally practical in everyday use as there are no edges to get in the way.*





Homeliness in every detail.

The lighting in the elegant **1 open wall shelf unit** as well as the **2 illuminated finger pulls** add the perfect finishing touch to the mood and homely atmosphere of this kitchen. But our kitchen leaves no doubt either when it comes to practical functionality: spacious **3 pull-out units** provide the storage space a family needs. The **4 raised oven** provides the best in ergonomic design and goes easy on your back.

*Integrated lighting*



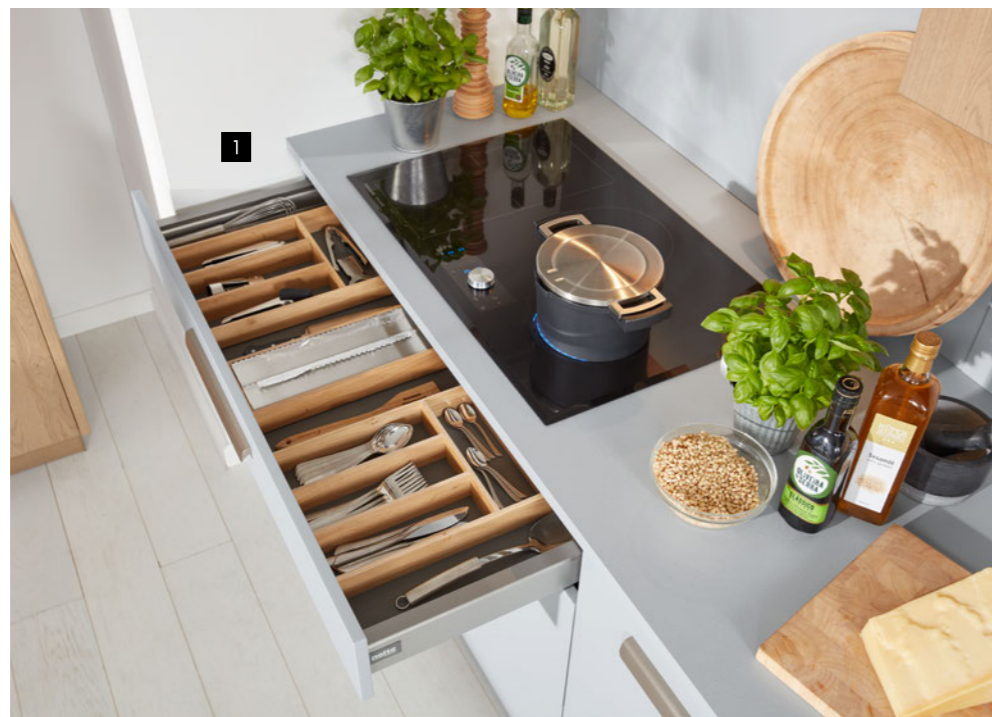
*The open wall shelf unit with integrated lighting as well as top and bottom panels in black glass exude a sense of modern homeliness.*



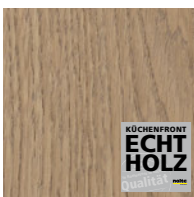
Home with a young feel.

"Our first home together combines kitchen and living area in a relatively small space. We instantly fell in love with the refreshing combination of TAVOLA in oak pinot and SOFT LACK in papyrus grey. It is both homely and modern while also providing plenty of storage space, even in places where others admit defeat: under the induction hob, the intelligent Matrix 150 size grid even leaves room for a **1** drawer. The **2** open shelf unit at the end converses with the living area and provides just the right space for displaying decorative pieces with personal meaning. Ideal for our living-area/kitchen combo."

# TAVOLA SOFT LACK



Cleverly storage: here, there's a place for everything and no space is wasted any more.



KÜCHENFRONT  
**ECHT  
HOLZ**  
Qualität

TAVOLA  
Oak pinot



KÜCHENFRONT  
**ECHT  
LACK**  
Qualität

SOFT LACK  
Papyrus grey soft mat



The flush-fit hob combines modern looks with easy maintenance.



## TAVOLA SOFT LACK

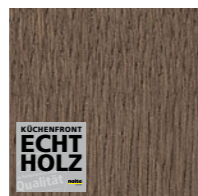
Style with clever and interesting details.

"As a designer, I love clean-looking lines, high-quality materials and ingenious design. I get all of this from charismatic TAVOLA oak barolo.

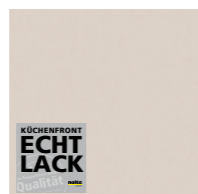
1 Stylish, finely grained real wood combined with SOFT LACK in sahara for look of perfect harmony. Exclusive details, such as the 2 cooking island with integrated table solution, 3 the flush-fitted hob as well as the unit along the wall with so much storage space and open shelf units emphasise a homely, modern character. That's my kitchen!"



TAVOLA  
Oak barolo



SOFT LACK  
Sahara soft mat



The handle in stainless steel look perfectly complements this kitchen.

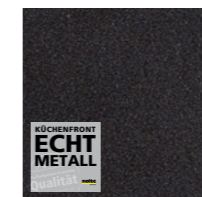






# FERRO SOFT LACK

"Metal is the material of the moment: it is right on trend which is why FERRO blue steel was our preferred choice too. The combination with SOFT LACK in arctic white makes refreshing statements and, despite its cool elegance, produces an eat-in kitchen we like to spend a lot of time in."



FERRO  
Blue steel



SOFT LACK  
Arctic white soft mat



WORKTOP  
Black PRO



FINGER PULL 561  
Black anodised

## Perfect in every detail.

The **1 open shelves at the end** make the island look less weighty and more casual. Interesting details, like the **2 black finger pulls** or the matching **3 black metal shelves with sliding doors** complement this configuration with a huge amount of storage space.

Merely the fact that the fronts are magnetic shows that FERRO is made of real metal.

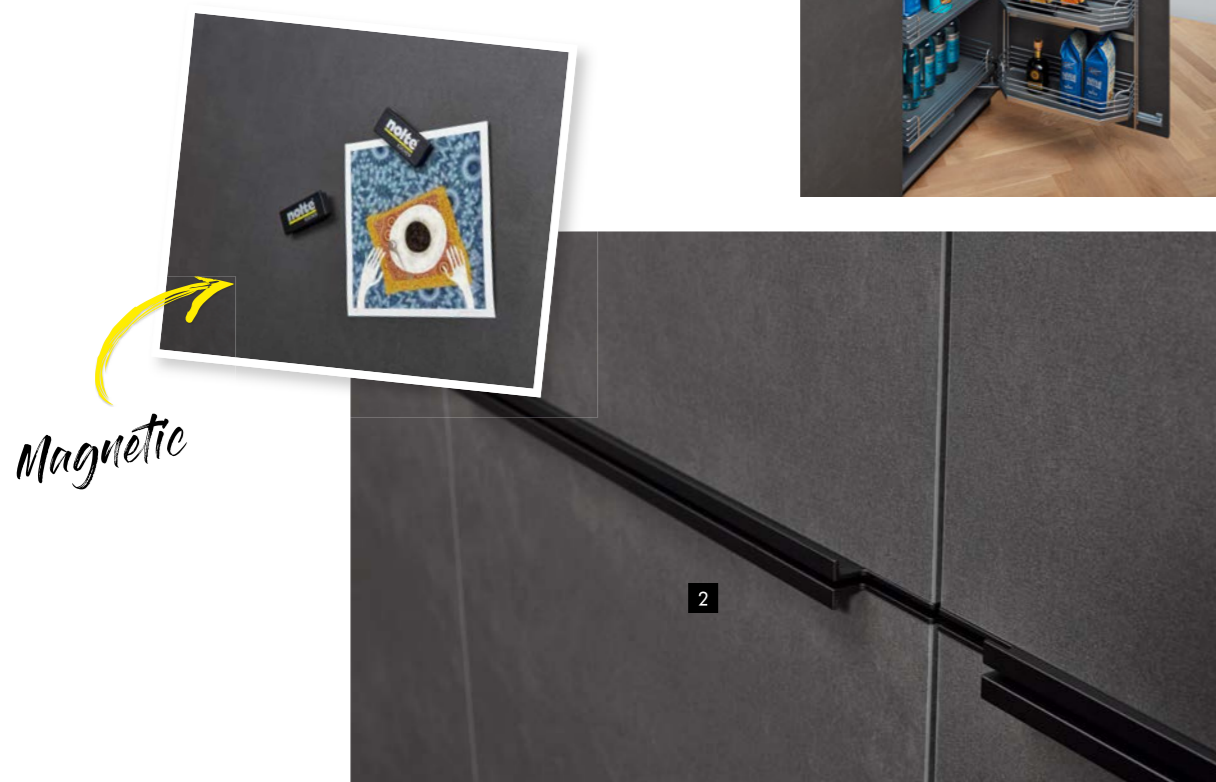


*Storage space no finer: concealed behind the magnetic, real metal fronts there's ample space for provisions and kitchen utensils.*

*The open wall shelf unit with the arctic white sliding doors leads the way to the living area.*



*The open shelves at the end give the kitchen island a more casual look.*





# METAL LUX

Cool look with exciting details.

"We wanted a kitchen with a hip metal look and went for METAL in steel grey. The front looks amazingly real – visitors we get are always well impressed. Great too is the way in which the **1** **worktop** has the same look – giving the kitchen an incredibly consistent feel. Instead of genuine material, we deliberately opted for reproduction – and gave the kitchen better equipment instead. An ergonomically **2** **raised oven** is just as much part of what we went for as are the practical larder units or the **3** **wall unit lighting**. You don't necessarily need a huge budget to get a kitchen in a really cool look! Here's the proof."



METAL  
Steel grey



LUX  
High-gloss white



WORKTOP  
Steel grey



G 824  
Handle combination in black



Generously sized larder units make this kitchen a veritable storage-space miracle.

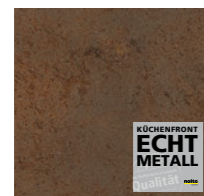


A clever way of perfectly illuminating the cabinet interior as well as the work surface!

Design highlight: all horizontal MatrixArt finger pulls can be illuminated.



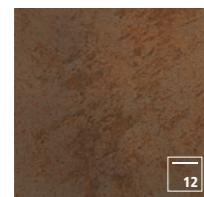
## FERRO NOVA LACK



FERRO  
Corten steel



NOVA LACK  
High-gloss white



WORKTOP  
Corten steel

### A kitchen for more quality of life.

"This kitchen is a man's dream come true:

The generously sized island makes cooking with friends an absolute pleasure! And the bar counter element extends an invitation to sit and have a beer together. It also goes without saying that the appliances featured leave you wanting for nothing. The materials used are genuine and authentic: **1 FERRO corten steel** makes an exciting contrast with **2 high-gloss white NOVA LACK**. Last but not least, the open shelf unit also provides sufficient space for all of your favourite reads!





# PORTLAND CORONA



PORTLAND  
*Cement anthracite*



CORONA  
*High-gloss arctic white*



We love good design and plenty of storage space. Now we have both.

“One thing’s clear: our new kitchen needs to meet our expectations on design and materials. Sleek, modern, spacious – those were our wishes. PORTLAND in cement anthracite combined with CORONA in high-gloss arctic white meet them perfectly. The **1 front with real cement surface** goes with our lifestyle and we’re passionate about it too because every front is unique. The **2 MatrixArt 900 base-unit height** is also exactly to our taste – the perfect combination of design, ergonomics and storage space. And with handleless fronts, its understated elegance is particularly impressive.”

*Cleverly stored away.*





## MATRIX 900

by **noite** KÜCHEN

### Design meets storage space.

With Matrix 900, Nolte Küchen has sent out a design message and makes the crossover between kitchen and living area even more fluid: the very shallow plinth in conjunction with the 900 mm carcass height not only provides an ideal working height with a huge amount of storage space but also creates a totally new kitchen look.

*Handles in stainless steel look make subtly balanced statements.*



## MATRIX ART 900

by **noite** KÜCHEN

### The art of leaving things out.

"MatrixArt 900 also makes handleless possible: The finger pulls integrated in the carcass make the kitchen even more graphic and sleek. Needless to say, it can also be fitted with contemporary LED lighting. A completely new dimension in kitchen architecture."



*Eva Brenner, interior designer, well-known from Germany's "Happy at Home" TV programme.*

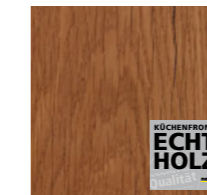




# PORTLAND LEGNO NOVA LACK



PORTLAND  
*Cement agate grey*



LEGNO  
*Oak marone*



NOVA LACK  
*High-gloss quartz grey*

This kitchen is a place to live in.

The combination of various **high-quality, genuine materials** gives this kitchen a warm, homely feel. The spacious dining table forms the focus of the room. No wonder that it instantly invites you to stay.

**MATRIXART**900  
by nolte köchen



The particular attraction also lies in the concealed.

Because when opened up, the **1 concealment doors** reveal a versatile interior with plenty of storage space. Hiding away the oven, for instance, when it's not needed. The **2 illuminated finger pull** adds the perfect final touch to this eat-in and feel-good kitchen which is equally practical as it is timeless.



*Integrated  
downdraft extractor*

*Concealment doors conjure a homely ambience that says style.  
Behind them: all manner of storage space and even appliances,  
such as the oven.*

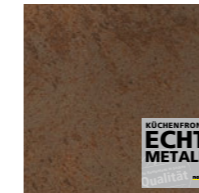




# FLAIR FERRO



FLAIR  
Black soft mat /  
thick edge in brass look



FERRO  
Corten steel

## MATRIXART 900

### An exciting combination.

"Our new kitchen was to be something very special. A real looker you don't find everywhere. We more or less instantly opted for FLAIR with its **■ edging in brass look**. This is where the name says everything: a kitchen with flair and charisma. The illuminated MatrixArt finger pulls bring out the edge particularly well.

The combination with FERRO in Corten steel is the perfect complement, with matching splashback adding the finishing touch. But this kitchen also has a number of highlights in terms of outfit: for instance, **■ open shelf wall units with sliding doors** are a practical combination of open shelf and cabinet, and the MatrixArt 900 base units at the end of a row provide practical storage for smaller-type items."



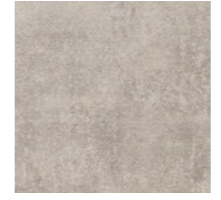
The edges in brass look make stylish eye-catchers.



MatrixArt 900 end base unit: a clever solution providing space for small utensils.



# STONE FEEL



STONE  
Concrete



FEEL  
Arctic white soft mat



G 811  
Handle combination in antique metal

*Looks astonishingly real!*

STONE in concrete captivates with its extremely authentic surface.



Authentic concrete look – pretty clever.

“Nothing is as good as the original. That's not what we think. A modern kitchen can look as refreshingly clean-cut as this. The **1** **STONE** surface looks exactly like concrete and feels like it too. Yet this is a **faithful reproduction**. Choosing this front leaves enough cash over to optimise equipping the kitchen, e.g. with pull-outs or practical interior organisation.”





Nature provides the most wonderful inspiration.

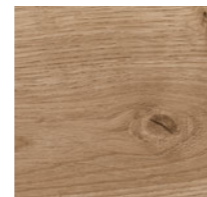
Nature, with its endless variety of surfaces and materials, provides the best inspiration. In our kitchen, STONE in **1 concrete** with the **2 surrounding elements in holm oak** is the best evidence of an accomplished result. The concrete look is not only featured on the outside but continues through on the inside too – leaving a perfectly balanced impression of harmony and only possible in this form from Nolte Küchen. The distinctive holm oak continues as a design element throughout the entire kitchen: from the splashback to the **3 bar element** on the island. The interesting solution for electrical appliances complements this cleverly planned kitchen.”

*Perfect, both inside and out!*

# STONE



STONE  
Concrete



SURROUNDING ELEMENTS  
Holm oak



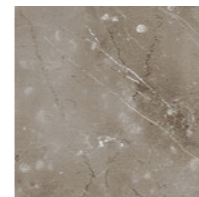
G 823  
Handle combination in stainless steel look, grooved



**MATRIX900**  
by nolte küchen



# MANHATTAN PHOENIX



MANHATTAN  
Marble grey



PHOENIX  
Black soft mat

## Fascinating marble.

"When we started building our house, we had just come back from Italy and were so fascinated by the way of life there and the way homes are furnished. We fell in love with MANHATTAN marble the moment we set eyes on it. The mat black and grey marble combination is both elegant and classy. The **1 island lends the kitchen visual weight** while the omission of classic wall units gives it a light and airy feel. And thanks to laminate with **2 anti-fingerprint surface finish**, PHOENIX black soft mat always looks immaculate and is also easy to keep clean. We love our kitchen with its Italian flair!"



*Perfectly integrated*



*Further highlights in our kitchen are the flush-fitted granite sink and the large hob which is flush-fitted too.*





The pull-out larder unit provides plenty of storage space.



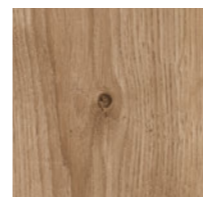
The wall unit as an option to end a unit row is an alternative with storage space for finishing off sides in the classic way.

### The kitchen as a space for individuals.

"I love to think out of the box. And like it when my life doesn't always go as expected. This is also why I find creative flexibility important in choosing the kitchen I want. TIMBER holm oak paired with FEEL white opens up all sorts of options that give me the design I want.

The **1 clever end section on the wall unit** with additional storage space as well as the **2 illuminated finger pulls** are further attractive features I wouldn't want to be without any more. If you ask me, the lighting makes the superb surface finish look even more spectacular."

# TIMBER FEEL



TIMBER  
Holm oak  
vertical



TIMBER  
Holm oak  
horizontal



FEEL  
White soft mat



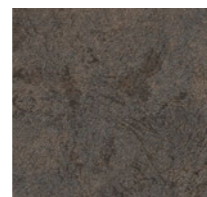
*Metal open shelf wall units are practical and aesthetically appealing stylish elements.*

## METAL MANHATTAN

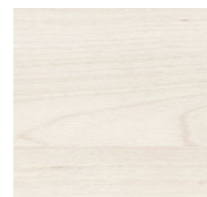
Sleek design style with a Scandinavian touch.

Kitchen design à la carte: MANHATTAN Kiruna birch and METAL copper oxide create an inimitable composition. The pale Scandinavian-looking wood decor harmonises perfectly with the vibrancy of copper oxide. A combination that competently underscores graphic style and minimalist lines.

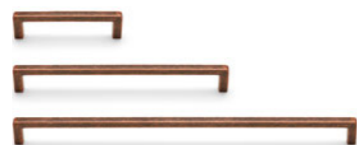
1 **Modern open metal shelving** as well as a 2 **kitchen island with creative table solution** are just more examples of outstanding, perfectly coordinated kitchen architecture.



METAL  
Copper oxide



MANHATTAN  
Kiruna birch



G 813

*Handle combination in antique copper*



# STONE ARTWOOD

Wood and stone –  
an exciting contrast.

A powerful combination: ARTWOOD in natural bough oak and STONE in basalt come together in a crucible that conjures aesthetic appeal of a very special type. Astonishing – the reproductions in wood and holm oak look deceptively real. A particular highlight is the **1 hob and sink island** with identical decor for front and worktop, creating a look that would appear to come from a single mould.

Lovely details add even more flavour – such as the **2 open shelf at the end** and the **3 illuminated finger pull**.



STONE  
Basalt



ARTWOOD  
Natural bough oak

*Harmony taking centre stage: front, worktop and illuminated finger pull are brought together with stunning effect.*



**MATRIXART**  
by **noke KÜCHEN**

### The rugged charm of authenticity.

"We love exceptional things, authenticity and vibrancy. This is precisely what we like about our loft in the old factory on the edge of town. Open spaces, floor to ceiling windows and, right in the middle of it all, the place we like to be in most – our eat-in kitchen. We fell in love with ARTWOOD flame scarfed oak from Nolte Küchen the moment we set eyes on it because it goes so well in our vibrant home. The look of scarfed wood exudes charisma and, in combination with the calmness of FEEL in sahara, conjures a perfectly balanced overall impression. The details are exceptional too: **1** wall units with integrated lighting, **2** a free-standing raised oven on the worktop and **3** open shelves on the rear of the island. No better way to start the day than having breakfast at our favourite place!"



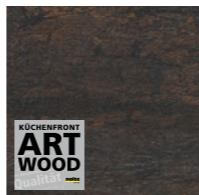
Wall units with illuminated finger pull along the bottom edge create atmosphere.



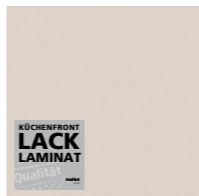
*Perfectly organised storage space*

# ARTWOOD FEEL

ARTWOOD  
Flame scarfed oak



FEEL  
Sahara soft mat



G 822

Handle combination anodised brown







# ARTWOOD SOFT LACK



ARTWOOD  
*Flame scarfed oak*



SOFT LACK  
*White soft mat*



## Getting life into the kitchen.

“Being creative, we love materials full of expression and design with a personal touch. This is precisely what we get from ARTWOOD flame scarfed oak. With its charismatic look and contrasting with SOFT LACK in white soft mat, it gives us the industrial look we absolutely love. And the best part about it: as an **authentic reproduction**, ARTWOOD not only comes with a cool look but with a cool price too. Cooking creative food together with friends is now something we mostly do at our place because they all enjoy being here. Just goes to show, style is not a matter of money!”



### Vibrant look in personally styled atmosphere.

The particular charisma of this hip kitchen is evident in every last detail. The **1 illuminated railing system**, the **2 illuminated upstand** and the **3 illuminated finger pulls** impressively set off the kitchen and create amazing mood lighting.



*Realistic reproduction!*



*The clearly organised larder unit gives you ample space for your provisions.*



*The extra deep worktop offers a generous amount of work surface, with the pull-out units below providing plenty of storage space.*

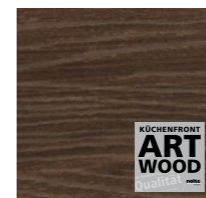


*Cool design and best possible functionality – the “PremiumLINE” drawer and pull-out system.*



# ARTWOOD SOFT LACK

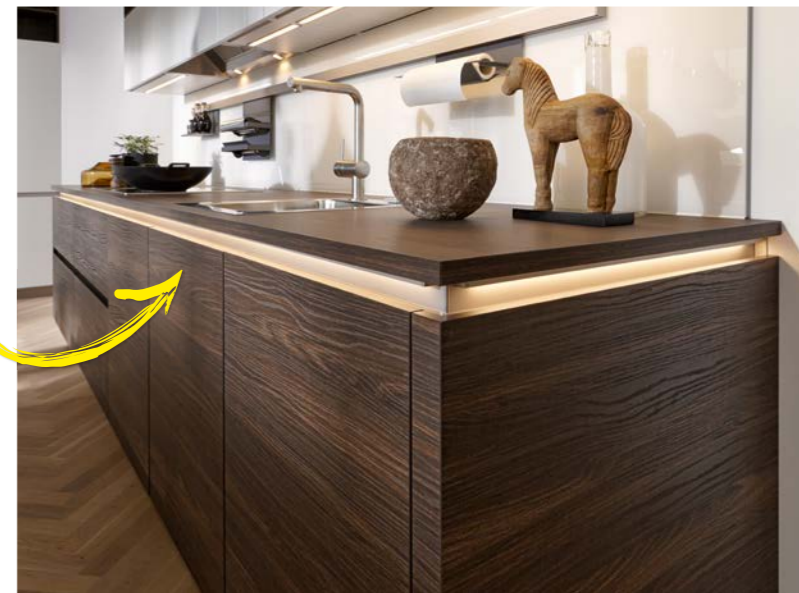
*Illuminated  
finger pulls*



ARTWOOD  
Walnut Cuba



SOFT LACK  
White soft mat



Our home has a big heart – for all of our friends.

“In our own home, we have now made our dream of a spacious eat-in kitchen come true. The **1 sideboard** and the **2 open shelf elements** are in the same decor as our kitchen fronts and complement the homely ambience. Perfectly in tune with our design style, this handleless Nolte kitchen comes in a clean-looking, linear look. ARTWOOD in walnut Cuba generates a warm and homely atmosphere. The authentic surface perfectly creates the illusion of real wood.”





1

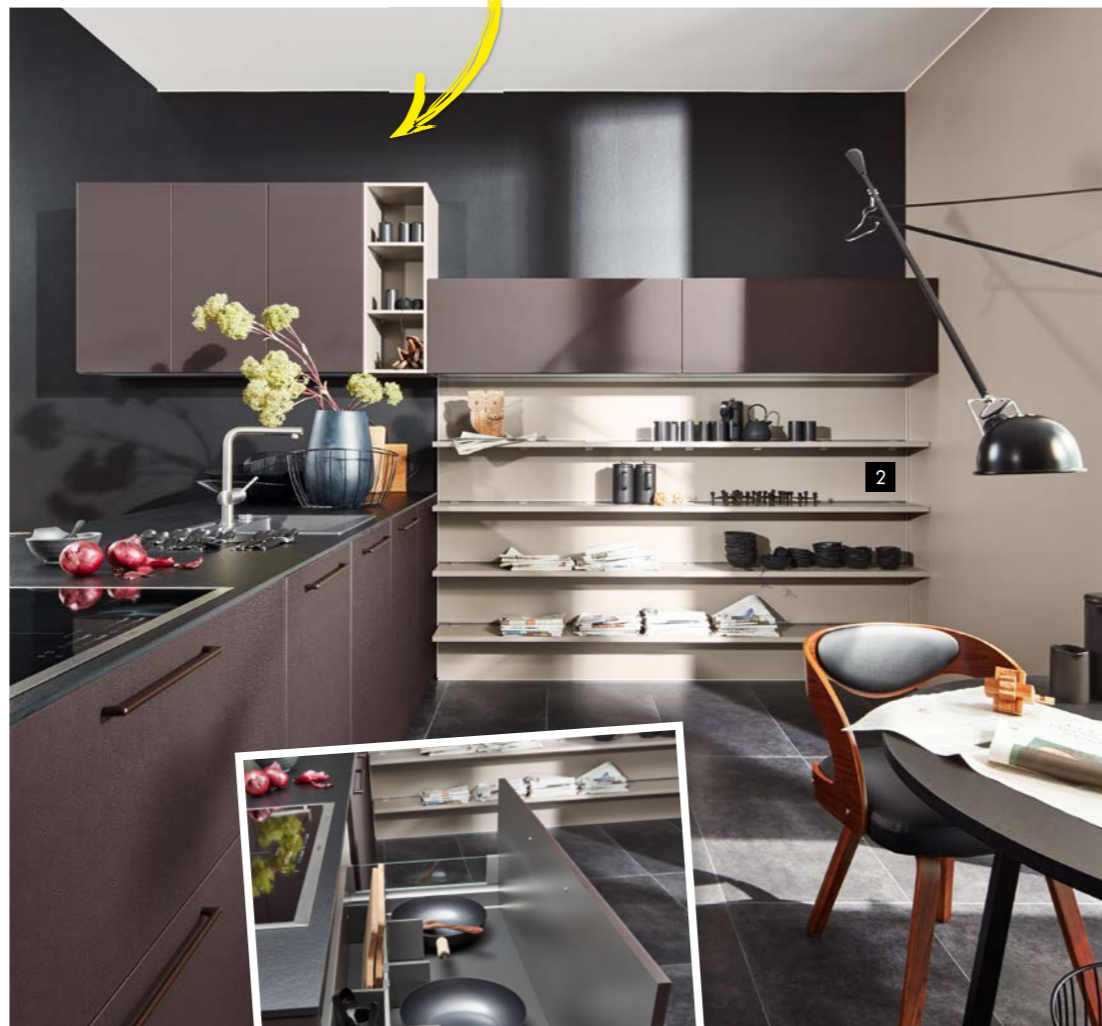
Stylish in every last detail: matching, brown anodised handles in metal complement the tasteful look.

### Beautifully inspired by nature.

The velvety texture of NAPPA in Brazil brown makes your kitchen an inviting living space that exudes warmth. Astonishing: it feels like **1 leather** but is made of a surface that can withstand the wear and tear of daily kitchen routine in every respect. **2 Open shelves in the paler lava** produce a harmonious combination and complement the design of the room. Altogether, a recipe with that little bit more.

*Perfect colour harmony*

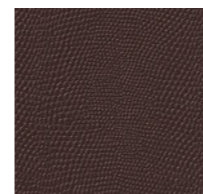
# NAPPA



2



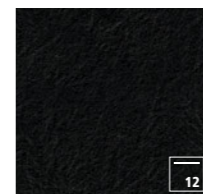
1



NAPPA  
Brazil brown leather look



SURROUNDING  
ELEMENTS  
Lava soft mat



WORKTOP  
Black PRO



G 822  
Handle combination anodised brown



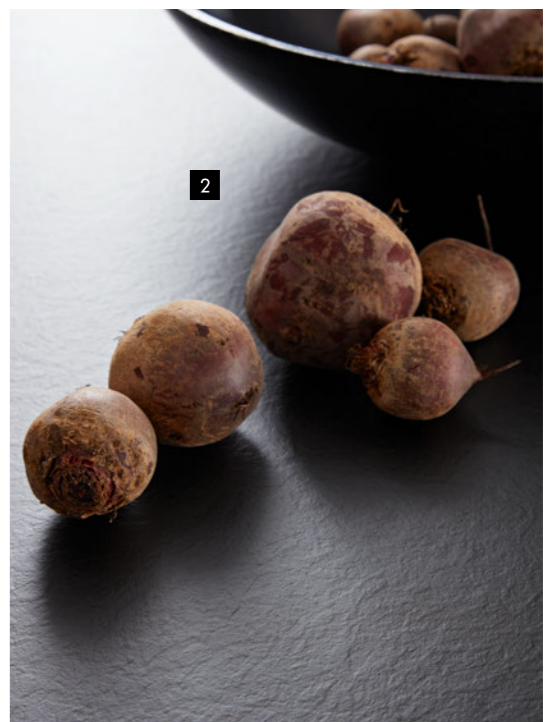
# NAPPA PHOENIX

A kitchen for the most exacting of demands.

NAPPA inca gold in combination with PHOENIX black soft mat is a real treat for the true gourmets among kitchen fans. A harmonious combination that not only radiates warmth from its pleasing leather-like feel. This exclusive ambience is paired with exclusive details: thanks to the 150 mm high **1 PremiumLINE drawer** a Nolte kitchen even provides storage space under a hob and perfect interior organisation – also in conjunction with the 12 mm worktop. The **2 worktop surface** in black PRO perfectly complements the overall impression.



With Matrix 150, fully functional drawers are possible below many hobs – even in conjunction with 12 mm worktops.



NAPPA  
Leather look, Inca gold



PHOENIX  
Black soft mat



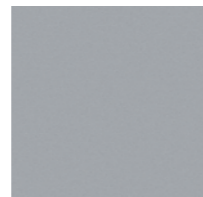
G 822  
Handle combination in anodised brown

Fashionable industrial look meets classic design.

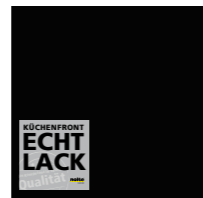
“As a passionate hobby chef, I had a clear picture of what I wanted my kitchen to look like. Both from a functional point of view as well as in terms of design. For instance, INTEGRA papyrus grey with the **black accentuated handle recess** goes perfectly with the rest of my furnishings. I just love cooking here with my friends.”

# INTEGRA SOFT LACK

INTEGRA  
Papyrus grey soft mat



SOFT LACK  
Black soft mat



*The choice is yours: understated without handle or accentuated in black or stainless steel look in two finishes.*



Eye-catcher: the glass display unit with glass in wired look underscores the industrial feel.



The black open metal shelf units provide additional storage space and can be extended in any way you choose.



Black and elegant.

"The **1** black open metal shelves not only make their entire contents instantly accessible and visible but can also be arranged in a row to give huge flexibility. Then there's the **2** wall display units with wire glass look. A real eye-catcher. No wonder my friends only want to cook at my place of late."

# MATRIX 900

by **noite** KÜCHEN



+20%

Storage wizard

For even more space: 900 mm carcass height.

Let us introduce you to Our Matrix 900 storage wizard. This base-unit height of 900 mm gives you extra storage space. This way, you can put away plates, saucepans and the many other kitchen utensils in complete relaxation and easily prepare your meals. It lets you make the most out of the space you have – an efficient solution for living in the small kitchen.



750 mm

750 mm

750 mm standard carcass height

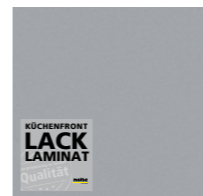


900 mm

900 mm

900 mm carcass height for Matrix 900

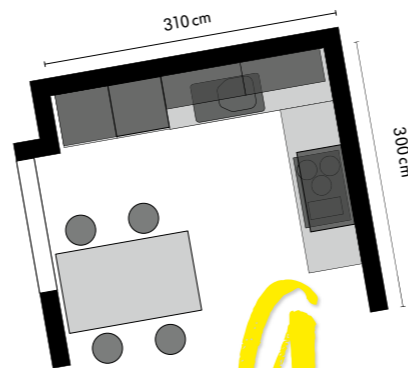
# LUX



LUX  
Papyrus grey soft mat



LUX  
Arctic white soft mat



9 m<sup>2</sup>

Put to optimum use



More kitchen per m<sup>2</sup>.

“Who would have thought that our little kitchen would ever come out looking as big as this? The space only measures 9 m<sup>2</sup>, but with LUX in arctic white and papyrus grey, our kitchen gives the impression of being much larger. We have even been able to integrate a dining table for the whole family and, naturally, as a family of four, so much storage space also comes in very handy. The white and grey colour combination also conjures a really refreshing look in this small space.”





VIDA is made entirely from recycled material.

# VIDA



VIDA  
Cotton papyrus



SURROUNDING ELEMENTS  
Curry

In harmony with the world around me.

"Environmental awareness can be as stylish as this! From the engineered-wood board to the finish paper, VIDA cotton papyrus is made entirely of recycled material and has an interesting feel on top. The harmoniously combined details emphasise natural charm and impress with the ultimate in practical functionality. From the **1 illuminated open shelf units with black tinted glass shelves** and **2 interior organisation in real oak** to the choice of handles, this kitchen shows its unique character. And in combination with the colour highlights in curry as my favourite shade, the ambience created is vibrant yet homely. I just feel so good here!"

## Colour ... for *living* in the kitchen.



Colour is  
*Inspiration, stimulation, creativity.*

Colour is life.

And provides virtually *endless*  
ways of individualising a kitchen.

Warm colours are stimulating,  
while cool colours tend to be calming.

Tone in tone creates *harmony*,  
while a clear contrast creates  
*exciting highlights*.

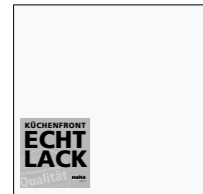
In short: nothing influences the atmosphere  
of a room more than colour.

With this in mind,  
get to know our colour concept –  
and get to know precisely *your kitchen*.

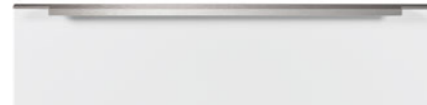




SOFT LACK  
Avocado soft mat



SOFT LACK  
Arctic white soft mat



FINGER PULL 560  
Metal look



## SOFT LACK

### All signals on green.

"That's my favourite colour. This beautiful avocado shade always reminds me of spring. So, why not choose a kitchen in this refreshing colour? Now I am standing in front of it – my SOFT LACK in avocado with arctic white. The open shelves at the end of the island are a real highlight. So too is the fact that I can perfectly integrate **1 the built-in appliances** in the right height thanks to the Matrix 150 grid system – all without any panel to spoil the look. **2 The 12 mm worktop** in arctic white is another lovely surprise: it not only looks good, the PRO surface impresses too! Incidentally, my friends went green with envy the first time they saw my new kitchen."

*All manner of  
storage space*

*The open shelf solution provides an  
attractive contrast with the arctic white  
of the kitchen island.*



**MATRIX900**  
by molte KÜCHEN



**MATRIX**  
**150**  
**NOLTE KÜCHEN**

### Perfect for living in the kitchen – Matrix 150.

Simple, logical and clearly structured: Matrix 150 gives you a grid system that is only available from us. It is based on a very simple and easy-to-follow dimensioning logic in which all widths, heights and, in some cases even depths, can be divided by 150 mm. And it also ensures that electrical appliances of all leading brands are perfectly integrated.

*Perfect ergonomics  
from built-in  
electrical appliances*

*In Nolte kitchens, the Matrix 150 grid system makes it easy to integrate all appliance brands for a perfect look – without any filler panels to spoil the overall impression.*

### Built-in appliances cleverly planned.

Baking, steam-cooking, defrosting, and even making coffee – high-quality built-in appliances ingeniously situated makes everything so much more of a pleasure. Even with appliances fitted at ergonomic eye level, Nolte Küchen's Matrix 150 grid system saves the need for any filler strips or panels to spoil the look. All appliances are neatly integrated. Needless to say, this not only goes for the oven but also for steam ovens, built-in coffee machine or even for a warming drawer.





# SOFT LACK

Fresh, urban look with creative details.

Crisp, purist, modern. Soft Lack with quartz grey and arctic white fronts makes a calm impression and yet sets the pulses of design fans and kitchen lovers racing all the same. The combination of **Matrix 900 with 600 mm high base units** gives the kitchen a distinctive silhouette and an additional surface for putting things down on. The **12 mm real-glass worktop** competently underscores the kitchen's timeless design. Practical can be as stylish as this: And a sleek linear look can be defined with this much expression.



*Design meets storage space.*



*The fronts from the mat lacquer concept are also available in many cool colour shades.*



SOFT LACK  
Quartz grey soft mat



SOFT LACK  
Arctic white soft mat



G 811  
Handle combination in antique metal

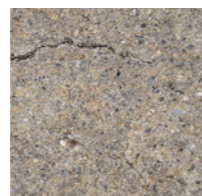


The worktop and aperture in Oldstone give the kitchen that something special!

SIGMA LACK  
Quartz grey soft mat



WORKTOP  
Oldstone



# SIGMA LACK

Modern, sleek and harmonious

"A long, narrow room with a patio door on one side and the area that opens up to the living/dining room on the other. Not going to be easy, I thought. But a modular plan with cooking and dishwashing zone opposite each other was the perfect solution! Just as the combination of SIGMA LACK in quartz grey with Oldstone: understated grey meets an extremely authentic stone decor – a well-balanced combination!"





# GLAS TEC PLUS



High-quality granite sink



GLAS TEC PLUS  
High-gloss white



WORKTOP  
Black PRO

Not only a pleasure to look at but also one to use.

“There are so many highlights in this kitchen, it's worthwhile taking a closer look: starting with the high-quality GLAS TEC PLUS real-glass fronts and black **MatrixArt finger pulls** to the **designer glass doors** frames with mat black aluminium frames and the corner solution with electric lifting column. Besides all this, this kitchen also features a spacious dining table, ample work surface on the 25mm worktop and, as a visual highlight, the **splashback in “Rusty Steel” decor.**”



As if by magic: the corner base unit solution with lifting column moves out at the press of a button.





*Any chosen lighting mood is very easy to create by remote control or mobile phone app.*

**Lighting is mood and atmosphere.**

Let there be light. Lighting in the kitchen not only creates a homely atmosphere or adds statements, it also - more importantly - makes us feel good. Modern LED technology produces a gentle light that can also be matched to the particular mood or time of day. The illuminated MatrixArt finger pull, for example, creates a special ambience and underscores the kitchen's lines with tasteful and stunning effect. An integrated wall-unit lighting conjures a warm and inviting ambience too!

*Exciting lighting effects*







## Living, dining and favourite room.

CARISMA LACK in white with accent colour in papyrus grey and opal sets the tone in this open structure. This stylish combination makes living in the kitchen a delight - everyday. The **1 raised dishwasher** is an ergonomic highlight and blends harmoniously into the overall picture. This makes loading dishes an absolute pleasure. The **2 plinth drawers**, that discreetly provide additional storage space, are a popular detail among kitchen fans. This kitchen is a wonderful feel-good place.



# CARISMA LACK



G 845

Handle combination in stainless steel look

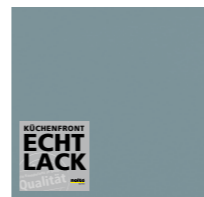
CARISMA LACK  
Papyrus grey soft mat



CARISMA LACK  
White soft mat



CARISMA LACK  
Opal soft mat



Ergonomically raised  
electrical appliances.



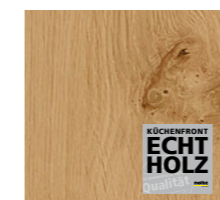
Sideboard  
and favourite corner



# SOFT LACK LEGNO



SOFT LACK  
White soft mat



LEGNO  
Champagne oak



*Modern & inviting*



## Family meeting place with clear structures.

"We love good design and we like a homely atmosphere – meeting everything we wanted, we combined SOFT LACK in soft mat white with LEGNO in champagne oak. Magnificent – the **1 white modern lacquered front** perfectly corresponds in looks with the natural charisma of real wood. We also love the **2 horizontal and vertical lines** you get with MatrixArt – which we chose because they are exactly to our taste and go perfectly with the way we wanted to plan our kitchen. We are absolutely delighted! So it's no wonder then that the whole family soon decided our kitchen was the place they preferred to be in most."

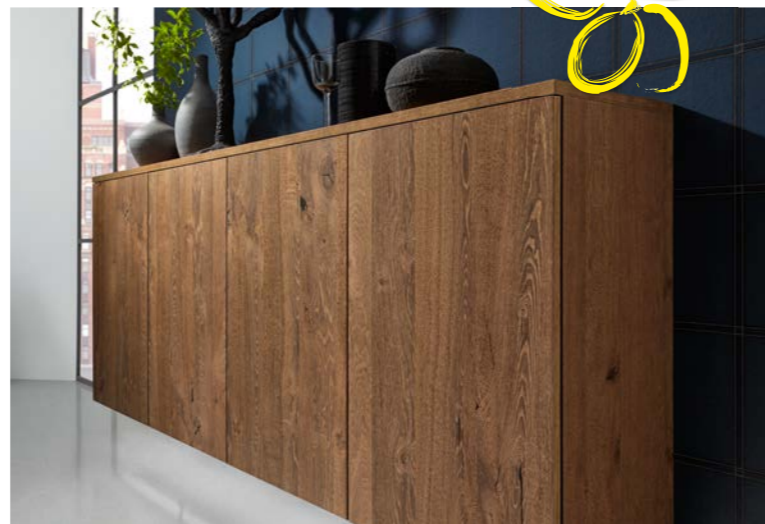
*The vertical lines of the finger pull are a stylish design element and add emphasis to the appliance housings.*

The ultimate in feel-good ambience.

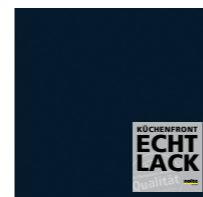
"My life is organised through and through. I need order and a neat look to make me feel at ease. I also need to see these qualities reflected in my kitchen. My LEGNO in truffle oak combined with NOVA LACK in high-gloss deep blue goes perfectly with my style of life and with my penchant for understated elegance. **1** Calm surfaces, straight lines, high quality – perfect. A dream too are the **2** concealment doors that keep all kitchen utensils and electrical appliances hidden from view. For me, the magic of this kitchen is in its purist charisma."



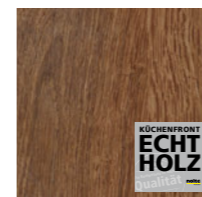
# NOVA LACK LEGNO



LEGNO concealment doors cleverly hide away kitchen equipment and create a tidy looking ambience.



NOVA LACK  
High-gloss deep blue



LEGNO  
Truffle oak



LEGNO  
Oak sepia



NOVA LACK  
High-gloss papyrus grey



**MATRIXART**  
by NOVA KÜCHEN

## LEGNO NOVA LACK



*Full-width  
finger pull*

LEGNO oak sepia leaves no doubt with its surface finish. And because the MatrixArt finger pull is even continued across the dishwasher as well, a consistent look is maintained throughout.



*Everything in its place and instantly to hand – intelligently designed storage space.*

Authenticity meets  
modern elegance.

"Being a journalist takes me all over the world. That makes my home very special to me. I look forward to its natural feel and authenticity – something I really love about my kitchen. With LEGNO in oak sepia, I come home to natural real wood, calm colours and charismatic design. And MatrixArt gives me **visual clarity and well-structured organisation, all without handles.** Simply perfect for my home!"



## Country kitchen *with a modern twist.*

No way old-fashioned! Nowadays, kitchens with a country-style feel are certainly very contemporary. Sometimes it's also the very architecture of the home that determines a kitchen style. It exudes warmth and a homely feel with its secret above all lying in loving attention to detail: elements reminiscent of bygone days, such as pilasters, cornices, light pelmets and moulded fronts or the clever combination of colours, make up much of the charm. Altogether attractive in these kitchens too is a deliberate mix of inconsistent style, e.g. with modern-looking open steel shelves. But see for yourself ...





# FRAME LACK

I like kitchens that are as colourful as my life.

"My kitchen is my little world. It's such a pleasure for me to cook a meal with fresh ingredients from my garden. I always wanted a kitchen that picks up on these colours. But: which colour shades go together?"

The Nolte Küchen **Mat lacquer concept** made it easy for me. I had the choice of **no fewer than 20 colours**, all of which perfectly harmonise with each other. I instantly fell in love with the warm "rose hip soft mat" and "lava soft mat" colours.



*Colours from the garden world*



*The glass display units go well with the kitchen's period style and give it a personal touch.*



FRAME LACK  
*Lava soft mat*



FRAME LACK  
*Rose hip soft mat*



K 138  
*Stainless steel look, metal*

*Balanced use of colour with warm shades from the mat lacquer concept.*

A haven of peace in traditional country-kitchen style.

Bygone charm with modern convenience – the WINDSOR LACK country kitchen fascinates with its traditional character and extends an invitation to dream. The **quartz grey fronts** are combined with accessories typical of the country-style kitchen, such as cornices, light pelmets or the canopy hood. This makes the kitchen a feel-good place that oozes particular charm.

# WINDSOR LACK



WINDSOR LACK  
Quartz grey soft mat



WORKTOP  
Rustic dark



K 138  
Stainless steel look, metal

*Storage space right into the corner*



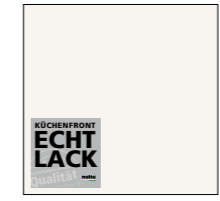
*The practical "Le Mans" corner base unit hides away all manner of kitchen utensils.*



# WINDSOR LACK

Tradition with a modern touch.

"We have been living in the country for years. We love nature, our garden and our home in the country. The way our new WINDSOR LACK kitchen plays with colour conjures the perfect symbiosis of living in the country and life at home. Featuring fashionable avocado colour and elements from bygone days, like **1** cornices and the **2** profiled fronts, the kitchen also communicates precisely this way of life. All the same, there's nothing we are prepared to forgo: we have even treated ourselves to a built-in coffee maker. Traditional can look as modern as this!"



WINDSOR LACK  
White soft mat



WINDSOR LACK  
Avocado soft mat



HANDLE 204  
Stainless steel look





*Emphasise that homely feel and add a casual, relaxed touch: glazing-bar display units and open shelf end units.*



The details make the difference.

**1** Display units with glazing-bar doors, **2** open shelf units, **3** cornices, light pelmets and a **4** handle that confidently picks up on the character of this style, complements the impression of a perfect country kitchen. This is where attention to detail really counts!





If you wish to explore the options in planning your new kitchen more closely, "My Kitchen" can provide you with numerous practical tips and ideas on how to make perfect use of the space you have. To start planning your kitchen straight away, use our web planner on [www.nolte-kuechen.de](http://www.nolte-kuechen.de)

Ask your kitchen retailer for further information or order your copy of "My Kitchen" right here:



*Ideas for creating space!*

### Optimum planning for your specific needs!

"The optimum kitchen is always matched to the specific needs of its users. And these are as different as the characters and the lifestyles of the individuals themselves. For instance, the needs of a family of four are completely different to those of people living on their own. Different structural situations also play a big part in planning a kitchen.

This is why Nolte Küchen offers all sorts of ideas and options for designing the kitchen in exactly the way its users need it to be. This all starts with careful planning and continues through to smallest of details. See for yourself on the following pages."



# LUX ARTWOOD

Our perfect kitchen.

"We sat down with the expert adviser at the kitchen retailer and put together the perfect kitchen for us. And the result not only looks stunning, it also impresses with all sorts of intelligent details and ideas that make life in our new kitchen an absolute pleasure."

Perfectly organised storage space.

"To store all the kitchen accessories we need, we opted for the Nolte Küchen PremiumLINE Glas drawer and pull-out system. It provides exactly the right place for everything in our kitchen and is also shown to be a veritable storage-space miracle. The pull-out units provide perfectly organised storage space in a width of up to 1200 mm. And believe it or not, the 750 mm planning depth gives us no less than 32% more storage space than standard base units. And all this with just another 150 mm from the wall. We'd never have thought how easy it would be to find a place for everything in the kitchen and still even have space left over for anything new we buy."

*Interior-lighting*



*Optional interior lighting perfectly presents everything inside the drawers and pull-outs – for a better view of everything inside and less disorder.*

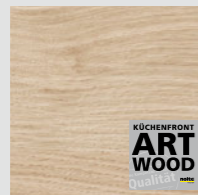
*+32%*



*Veritable storage wizard*



LUX  
High-gloss quartz grey



ARTWOOD  
Natural bough oak



FINGER PULL 560  
Stainless steel look

## In the kitchen, organisation is half the battle.

“On the subject of interior organisation, we were completely taken aback by the line-up that Nolte Küchen has to offer: starting with anti-slip mats to variable cutlery and utensil dividers in plastic or even real wood, it simply leaves you wanting for nothing. We went for the option in real oak and chose it for our kitchen – this way, everything is always in its place and the drawers and pull-outs are perfectly organised. The oak colour shade goes perfectly with the quartz grey fronts.”



Laminate



Genuine oak



Genuine ash wood, black



Everything perfectly organised.



*For optimum workflows.*

"To ensure efficient workflows in the kitchen, we looked at the best ways of making work paths ideal while we were planning it. As a general rule here: while the refrigerating/food storage, cooking and dishwashing zones should be no more than two arm lengths apart, there should also be sufficient space for two people to cook in. This has been solved perfectly in our kitchen. Which means we don't get in each other's way when we're cooking."

**Cooking: a shared experience.**

"Our kitchen centres around cooking together! This is why we placed so much importance on optimising workflows. And when it came to choosing the most suitable hob for us, the planner's experience didn't let us down either, nor did the options available to us from a Nolte kitchen: everything's possible, be it induction hobs or gas, retracting extractors, downdraft extractors or also the classic extractor hood. This is precisely what we ultimately decided on, it simply goes best with our kitchen!"



*Hob with retractable extractor in the worktop*



*Integrated downdraft extractor*





*Raised dishwasher*

### The measure of all things.

"Let's be honest: if you like cooking as much and as often as we do, the kitchen should fit in with us and not us with the kitchen. Because, in the long run, this is the only way that makes a kitchen a joy and pleasure to work in. With Nolte Küchen, it was so reassuring to know we could fit the oven at eye level and even raise the dishwasher as well. Needless to say, we were also able to define the height of the work surface."



*Built-in appliances installed at an ergonomic work height save your back and make work a whole lot easier.*





## Everything clean in a flash.

"We both love to cook and, of course, this always leaves you with waste and dirty pots. So it was important for us to know right from the start that we can quickly get the kitchen cleaned up again once we have eaten. This is where the large sink with a good-sized draining board is a huge help because it means we can easily and quickly clean pots and pans we can't put in the dishwasher. To sort waste, we went for the classic option under the sink - it's organised and saves us the bother of having to take it anywhere else. And because the waste bins are suspended in a frame, we're not constantly cleaning the pull-out either because there's nowhere bits of waste can accidentally fall into."

*Sorting waste  
made easy!*



### Chilled, fresh or non-perishable ...

"... in our kitchen, there are so many different things we need to find a place for: from kitchen appliances, cookware, plates and cutlery to all sorts of food and provisions. In the larder unit, for instance, we keep all types of non-perishable food that needs to be in easy reach all the time. Fresh food goes in the large refrigerator. In planning our kitchen, we chose a solution without any corners because that's best for the space we have. But with Nolte Küchen, of course, we would also have found loads of clever ideas for the corner, such as the practical LeMans corner base unit."



*"Le Mans" corner base unit solution.*







*Perfect both  
inside and out!*



### A look of harmony throughout.

"This feature, in particular, made us realise we were making the right choice: unlike most other brands, all Nolte Küchen units are finished in the same decor both inside and out, no matter which of 14 carcass decors you choose. This initially sounds like a trivial detail, but in fact it has a huge impact on the homely feel it creates: for our wall units, this means that instead of sterile white, they are finished in the same wood decor on the inside too. It fills me with joy whenever I open a cupboard. Then there's also the "edge seal" at the carcass front. It makes sure less dust gets inside the kitchen unit."



*Perfect inside and out, not only for wood decors but also for concrete and plain colours.*



*Sealing off the carcass at the front, the edge seal makes sure that less dust gets inside the unit.*

### Quality is a matter of detail.

We accept no compromising when it comes to quality. Stringent testing provides the basis for ensuring that your kitchen will continue to be safe and reliable even after many years of use. This is also guaranteed by the GS label for tested safety that comes with Nolte kitchens. More important for you, though, is the high level of quality you experience every day in your Nolte kitchen, quality that is noticed in all the many details and features.

### Firmly integrated in Nolte kitchens: responsibility and ecology.

Conserving natural resources, keeping air and water clean and promoting sustainability. Three key pillars of responsible and sound ecological practice that have been anchored at Nolte Küchen for many years. For instance, with modern filter systems for non-polluting production or with eco-friendly, recyclable packagings and only using timber from sustainable and responsible forest management. In terms of pollutant emissions, our materials fall well short of the requirements defined by law. The best key to living at home in a healthy environment.

Official inspection certificates and test labels also confirm our devoted commitment to the environment in all key domains – this is something that makes us particularly proud. We are one of the first in our industry to receive the FSC® label and hold PEFC™ certification.



## Living in the kitchen ...

... a message you can certainly take literally where Nolte Küchen is concerned, and one that never fails to keep me fascinated as a kitchen planner with every day that passes. Here you will find everything to make your dream kitchen come true: to suit virtually any budget, any expectation and always in top quality – made in Germany.



*Eva Brenner, interior designer, familiar from Germany's "Zuhause im Glück" ("Happy at Home") TV programme.*



**nolte**<sup>®</sup>  
KÜCHEN

Nolte Küchen GmbH & Co. KG | Anni-Nolte-Straße 4 | 32584 Löhne | +49 57 32 / 899 0 | [www.nolte-kuechen.de](http://www.nolte-kuechen.de)

VFKJ19-GB

Subject to technical change without notice. Colour shades in this catalogue may sometimes vary slightly from original colours for printing and photographic reasons. Nominal charge € 5

